



# DISK ENGINE SILENCERS

Stoddard Silencers, Inc. - Engine Division  
 888 E. Belvidere Rd., Unit 411. Grayslake IL, 60030  
 Tel: (847) 543-1037 fax: (847) 543-1245  
 Web Page: [www.stoddardenginesilencers.com](http://www.stoddardenginesilencers.com)

## E61, E62, E63

### Application

Disk Packed Engine Silencers are designed for generator enclosures or other situations where available space may prevent traditional silencers from being an option. The E60 series is designed to be used in locations where maximum exhaust silencing is required.

### Design

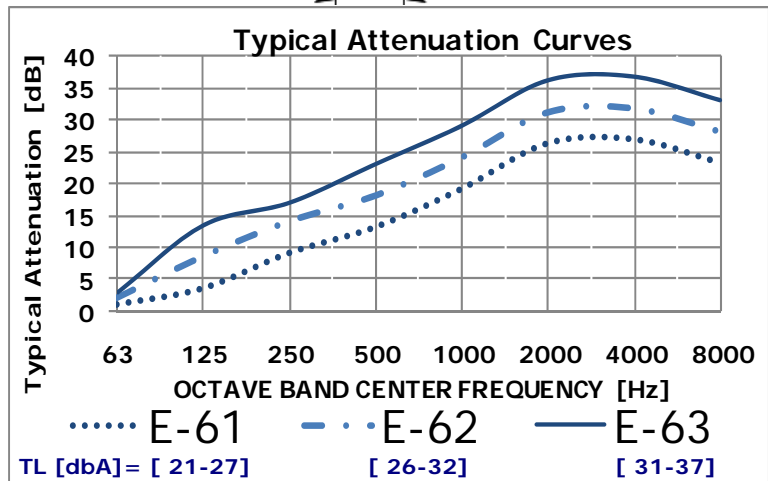
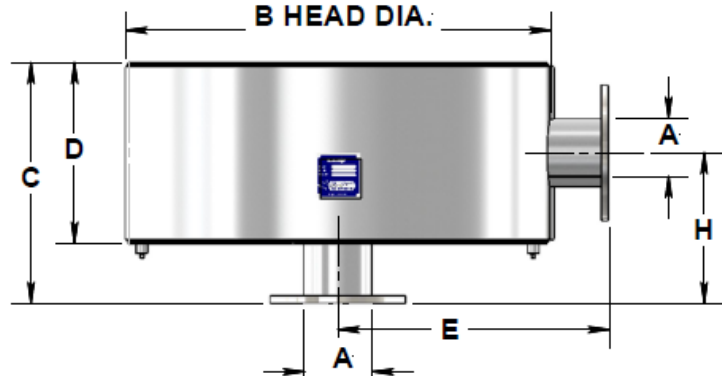
Exhaust gases flow through ported tubes and resonator chambers which attenuates the noise over a wide band of frequencies. The silencers can be installed horizontal or vertical positions.

Individual dimensional drawings are available on request.

### Construction

Robust all-welded steel construction for long service life. Exterior finished in a quality black heat resistant finish coating. Flanges drilled to 150# ANSI patterns.

**SPECIAL CONFIGURATIONS,  
 MATERIAL AND FINISH  
 AVAILABLE UPON REQUEST**



MODEL	E61					E62					E63					
	A	B	C	D	E	H	B	C	D	E	H	B	C	D	E	H
SIZE	Dia	OAL					Dia	OAL				Dia	OAL			
4	18	12	8	13	8		26	12	8	17	8	28	14	10	18	9
5	20	12	8	14	8		28	14	10	18	9	36	14	10	22	9
6	28	14	10	18	9		36	16	12	22	10	42	16	12	25	10
8	32	16	12	20	10		42	18	14	25	11	54	18	14	31	11
10	36	20	16	22	12		54	20	16	31	12	60	24	20	34	14
12	42	24	20	25	14		60	24	20	34	14	66	28	24	37	16
14	48	24	20	28	14		66	26	22	37	15	72	30	26	40	17
16	54	28	24	31	16		72	30	26	40	17	84	32	28	46	18
18	60	30	26	34	17		84	30	26	46	17	96	32	28	52	18

Dimensions are in inches

**Larger sizes available upon request.  
 We specialize in custom design silencers.**



# ACCESSORIES

Stoddard Silencers, Inc. - Engine Division  
 888 E. Belvidere Rd., Unit 411. Grayslake IL, 60030  
 Tel: (847) 543-1037 fax: (847) 543-1245  
 Web Page: [www.stoddardenginesilencers.com](http://www.stoddardenginesilencers.com)

## Mounting Clips

PART NO.	B Shell Dia.	Y	W	V	U	WT. PER BRACKET
A14-101	Up to 20"	0.75	2.5	3	1.25	2
A14-102	24" to 28"	1	3	4	1.5	3.5
A14-103	30" to 48"	1.25	4	4	2	6
A14-104	54" to 102"	1.375	6	6	3	15

Other sizes available

## Vertical Mounting Brackets

PART NO.	B Shell Dia.	Y	W	WT. PER BRACKET
A11-101	Up to 24"	0.875	4 x 4	3.5
A11-102	26" to 32"	1	5 x 5	6
A11-103	36" to 54"	1.25	6 x 6	11
A11-104	60" to 72"	1.375	7 x 7	32
A11-105	76" to 102"	1.375	9 x 9	70

Other sizes available

## Rain Caps

PART NO.	"A" NOM PIPE SIZE	WT. PER BRACKET
A23-107	4	1.5
A23-108	5	1.75
A23-109	6	6.5
A23-110	8	9
A23-111	10	10.5
A23-112	12	13.5
A23-113	14	15.5
A23-114	16	18
A23-115	18	20.5

Other sizes available

### MITERED ELBOWS

### FLEX CONNECTIONS

OTHER ACCESSORIES AVAILABLE UPON REQUEST.